

BARIUM

400W-AC-63,600L

400W AC powered flood light 63,600 Lumens

BARIUM Commercial & Industrial LED High Bay & Stadium Lights

63,600 Lumens
159lm/W

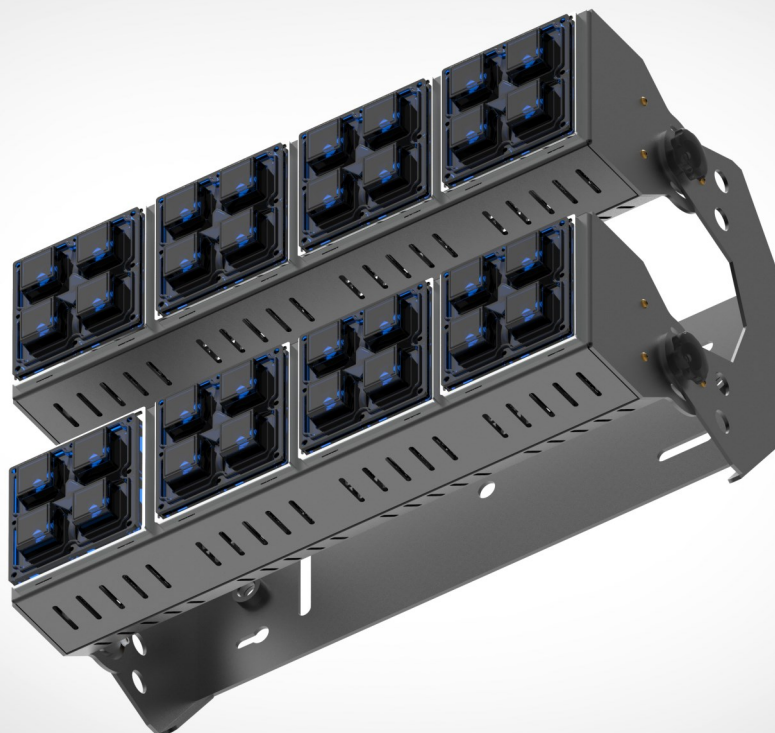
LED Replacement for 200W/300W/400W Metal
Halide High bay fittings

Suitable for: Sport Arenas, Gymnasiums, Tennis
Courts, Warehouses any Very large Areas

32 X Next Generation LED's

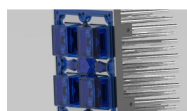
Surface Mount and Wire Guard

Customised LENSES available



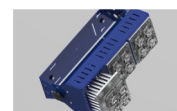
MECHANICAL

Adjustable LED Flood Light.
With Different Optic Lenses.
Suitable for very large areas like: Stadium
Lights, Indoor Arenas, Gymnasiums,
Warehouses, Garages, Manufacturing
facilities, Aircraft Hangers, Retail stores,
Super Stores & Tennis Courts.
Fitting with different LENS options



LED CONFIGURATION

LUMILEDS MX
2x2 LUMILED MX Extreme High Power CHIPS
Nominal CCT/Color 5650K Cool White
Typical CRI 70
Typical Luminous Flux @350mA
159lm per Watt
Extreme Cooling Patented



AC POWER

Powered by AC Single Phase.
Power Factor Greater than 0.98

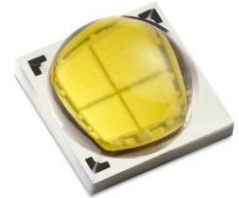
BARIUM

400W-AC-63,600L

400W AC powered flood light 63,600 Lumens

BARIUM Commercial & Industrial LED High Bay & Stadium Lights

Designed System Performance



Comparable to 200W—400W Metal Halide replacement LED solution	63,600 (LUMENS)
LED Driver	Meanwell
Supply Volts	100-300VAC
Power Factor	Greater than 0.98
Power Consumption	400W
IP Rating	IP67
NEXT generation LED's	LUMILEDS MX
Quantity	32 x LUMILED's MX
Nominal CCT/Colour	5650K Cool White
Typical CRI	70
Typical Luminous Flux (lm) @350mA Forward Current +_1W	159lm per Watt
Cooling Multi Contact Star Extruded ALUMINIUM	Machined Profile
Lens Type Used	Numerous Lenses Available



IS 15885(Part 2/Sec13)



R-41027766

(for XLG-150I type only)



Note.15
(Except for Blank type)



(Except for L type)



LVLE SELV

(For 24V only)

(Except for L type)

IP67



Type HL

US C

(for 12,24 only)

E320521



CB

EAC

CE



Note.12